

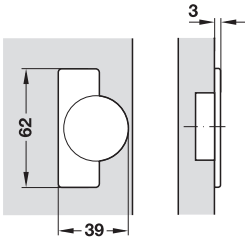
Lift up flap hinge

For lightweight flaps up to 1.5 kg

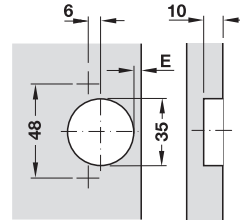
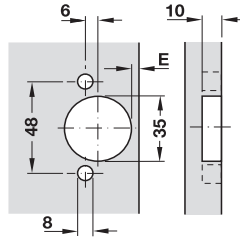


- Opening angle: 95°
- Material: Cup and hinge arm: Steel
Galvanized
- Finish:
- Installation: Flap for screw fixing to cabinet
up to 1.5 kg
- Lid weight: For flap thickness: 12 – 22 mm,
for flap width: max. 450 mm,
for flap height: max. 315 mm
- Dim.:
- Adjustment facility: Height and side adjustment
- With or without automatic closing spring (optional)

Installation dimensions



Drilling pattern for cup fixing



Note
Trial mounting is recommended.

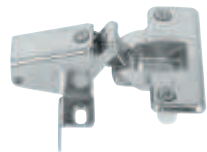
For press fitting
Drilling pattern 48/6

For screw fixing
Drilling pattern 48/6

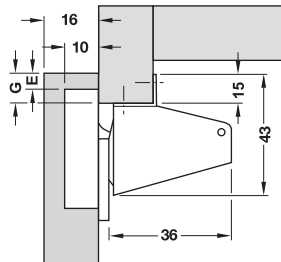
Example calculation of the flap overlay:
Overlay G = 4 mm + distance to cup E (4 mm) = 8 mm

→ For straight flaps

For face frame mounting (overlay), with angled screw-on plate



Two-sided screw fixing to face frame

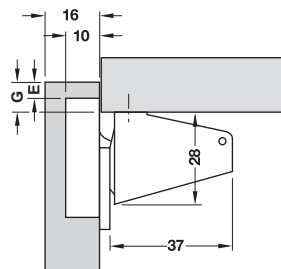


| Cup fixing | Drilling pattern | With automatic closing spring | Without automatic closing spring |
|-------------------|------------------|-------------------------------|----------------------------------|
| For press fitting | 48/6 | 356.35.713 | 356.35.731 |
| For screw fixing | 48/6 | 356.35.815 | – |

Packing: 250 pieces

→ For straight flaps

For overlay mounting, with straight screw-on plate



| Cup fixing | Drilling pattern | With automatic closing spring |
|-------------------|------------------|-------------------------------|
| For press fitting | 48/6 | 356.35.723 |

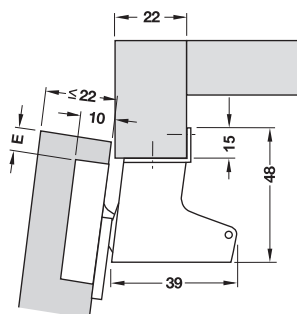
Packing: 250 pieces

→ For straight and convex flaps (post-forming)

For face frame mounting (overlay), with angled screw-on plate



Two-sided screw fixing to face frame



| Cup fixing | Drilling pattern | With automatic closing spring |
|-------------------|------------------|-------------------------------|
| For press fitting | 48/6 | 356.35.740 |

Packing: 200 pieces

DGH-M-INT 2013, HDE-en, 01/13; Dimensional data not binding. We reserve the right to alter specifications without notice.